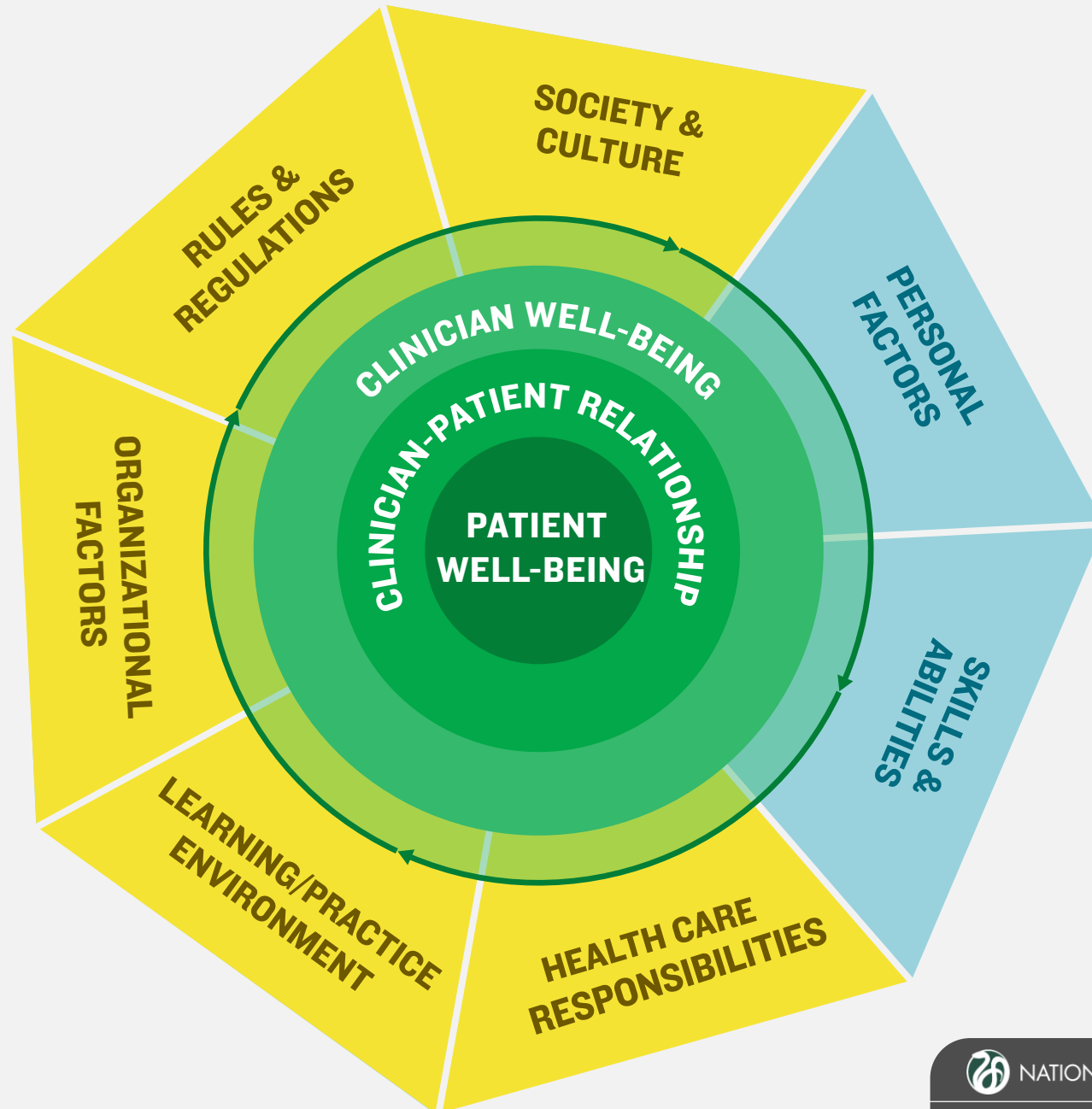


FACTORS AFFECTING CLINICIAN WELL-BEING AND RESILIENCE

This conceptual model depicts the factors associated with clinician well-being and resilience; applies these factors across all health care professions, specialties, settings, and career stages; and emphasizes the link between clinician well-being and outcomes for clinicians, patients, and the health system. The model should be used to understand well-being, rather than as a diagnostic or assessment tool. The model will be revised as the field develops and more information becomes available. Subsequent layers of the model, and an interactive version of the model, are in development in conjunction with the Action Collaborative's other working groups and will be made available shortly.



EXTERNAL FACTORS

SOCIETY & CULTURE

- Alignment of societal expectations and clinician's role
- Culture of safety and transparency
- Discrimination and overt and unconscious bias
- Media portrayal
- Patient behaviors and expectations
- Political and economic climates
- Social determinants of health
- Stigmatization of mental illness

LEARNING/PRACTICE ENVIRONMENT

- Autonomy
- Collaborative vs. competitive environment
- Curriculum
- Health IT interoperability and usability/Electronic health records
- Learning and practice setting
- Mentorship program
- Physical learning and practice conditions
- Professional relationships
- Student affairs policies
- Student-centered and patient-centered focus
- Team structures and functionality
- Workplace safety and violence

INDIVIDUAL FACTORS

PERSONAL FACTORS

- Access to a personal mentor
- Inclusion and connectivity
- Family dynamics
- Financial stressors/economic vitality
- Flexibility and ability to respond to change
- Level of engagement/connection to meaning and purpose in work
- Personality traits
- Personal values, ethics and morals
- Physical, mental, and spiritual well-being
- Relationships and social support
- Sense of meaning
- Work-life integration

RULES & REGULATIONS

- Accreditation, high-stakes assessments, and publicized quality ratings
- Documentation and reporting requirements
- HR policies and compensation issues
- Initial licensure and certification
- Insurance company policies
- Litigation risk
- Maintenance of licensure and certification
- National and state policies and practices
- Reimbursement structure
- Shifting systems of care and administrative requirements

HEALTH CARE RESPONSIBILITIES

- Administrative responsibilities
- Alignment of responsibility and authority
- Clinical responsibilities
- Learning/career stage
- Patient population
- Specialty related issues
- Student/trainee responsibilities
- Teaching and research responsibilities

ORGANIZATIONAL FACTORS

- Bureaucracy
- Congruent organizational mission and values
- Culture, leadership, and staff engagement
- Data collection requirements
- Diversity and Inclusion
- Harassment and discrimination
- Level of support for all healthcare team members
- Power dynamics
- Professional development opportunities
- Scope of practice
- Workload, performance, compensation, and value attributed to work elements